

Configurando o Servidor de Impressão Primário

Este procedimento descreve o processo de configuração de um servidor de impressão primário em um sistema Windows.

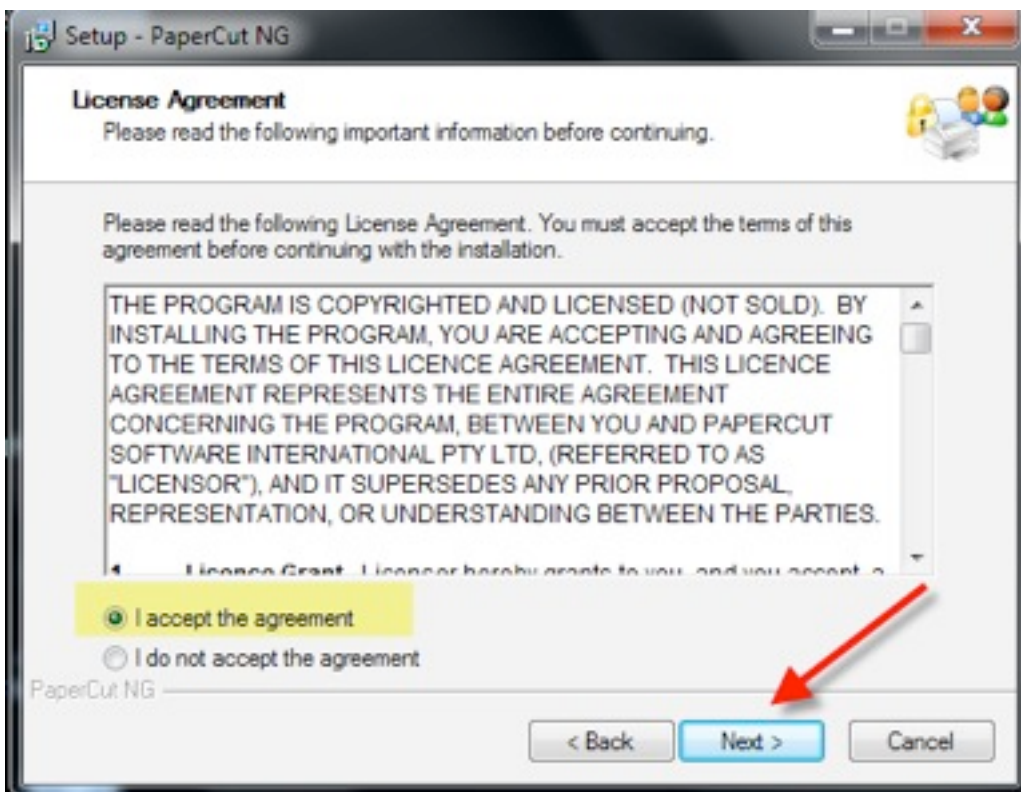
Clique duas vezes no instalador do PaperCut



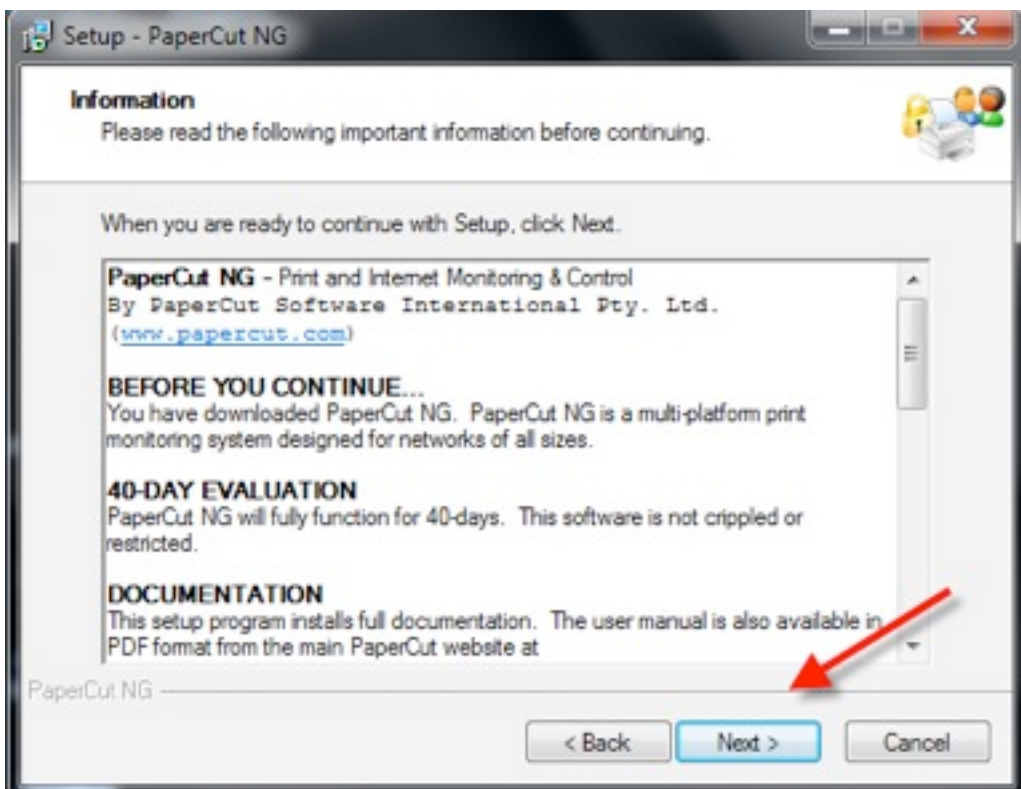
A seguinte tela se abrirá, clique em Next:



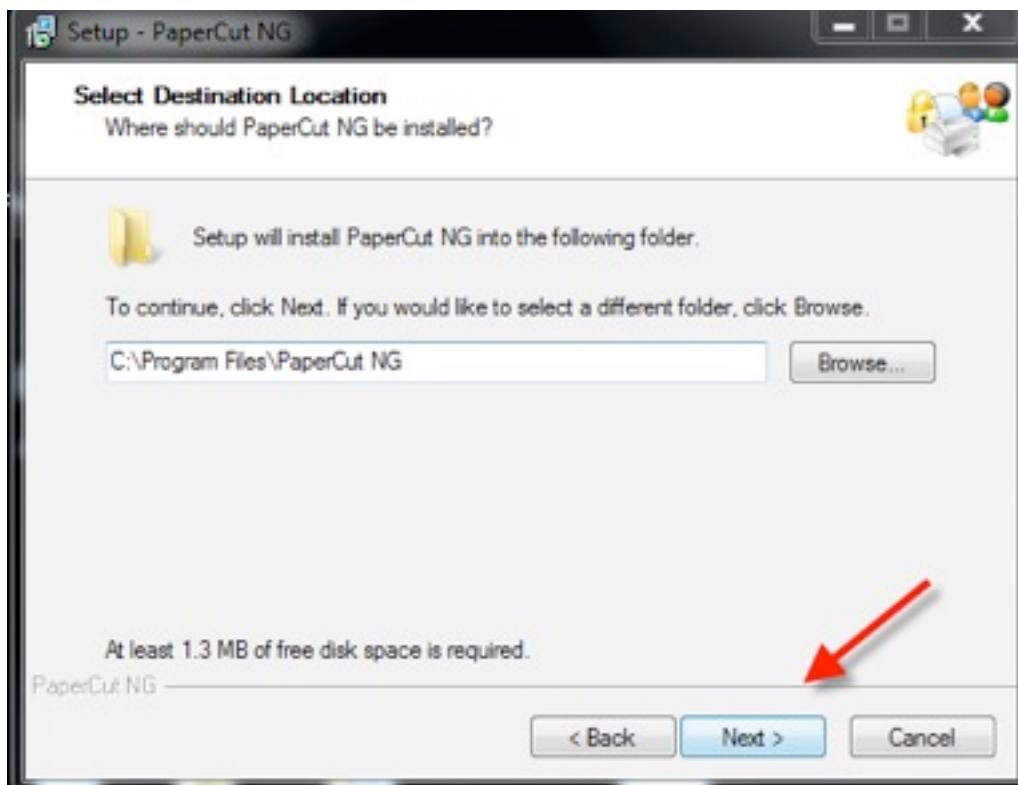
Leia o contrato e marque I accept the agreement se concordar, clique em Next



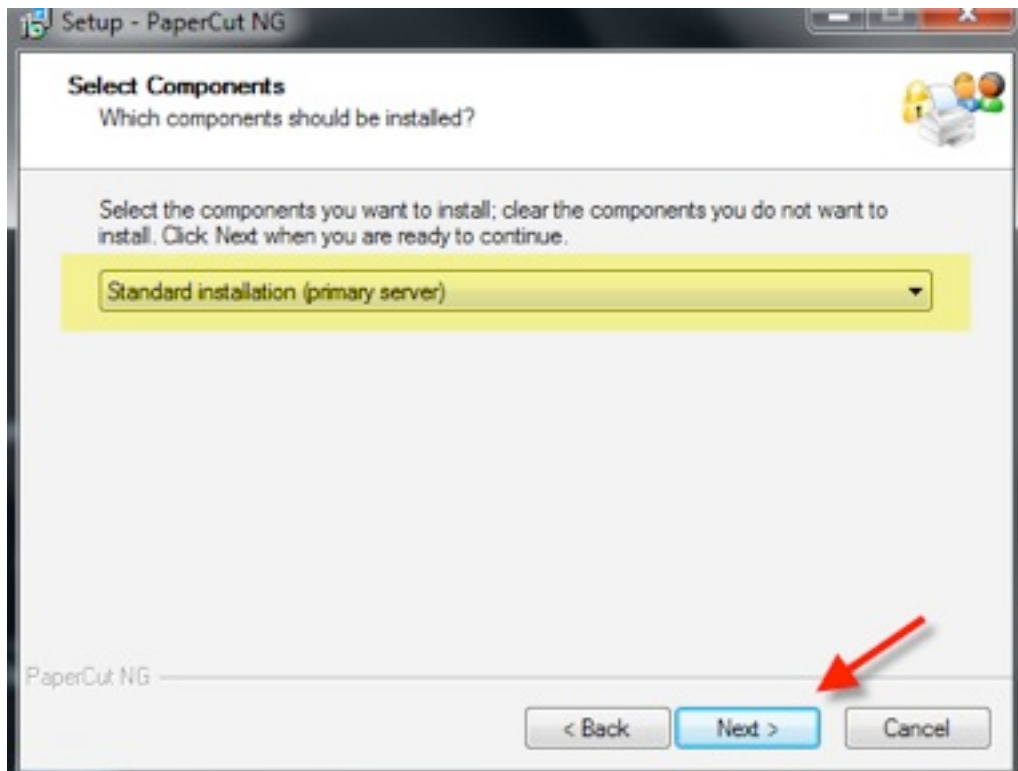
Leia as informações e Clique em next



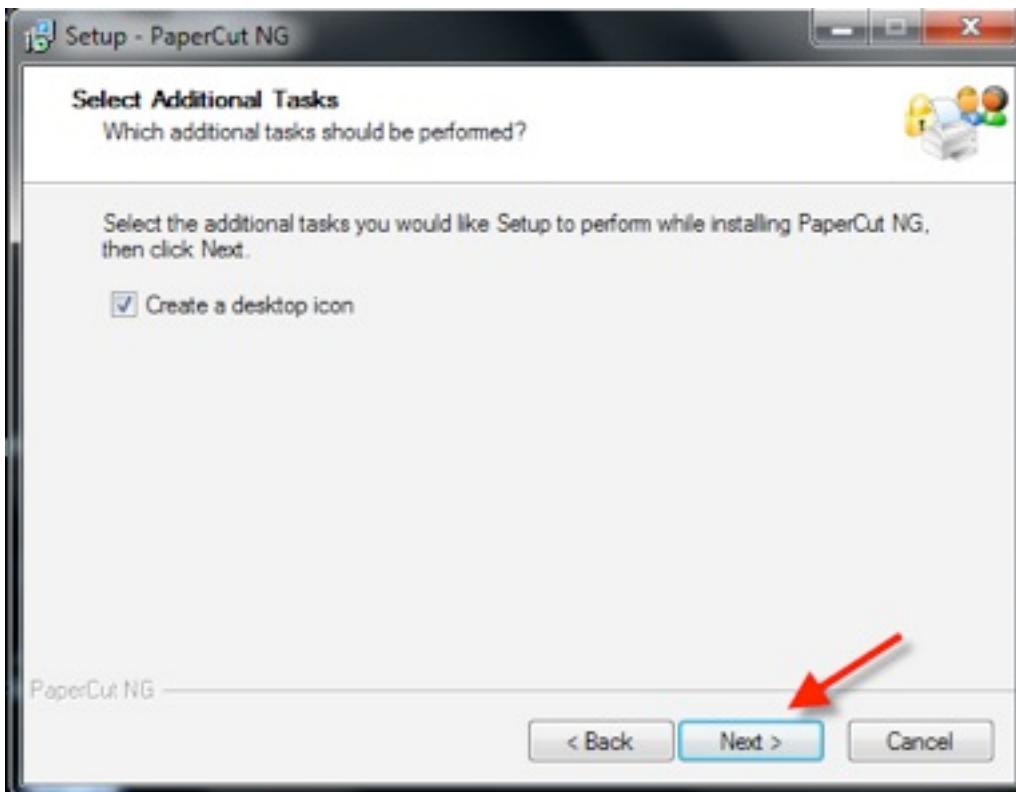
Escolha o diretório de instalação e clique em Next



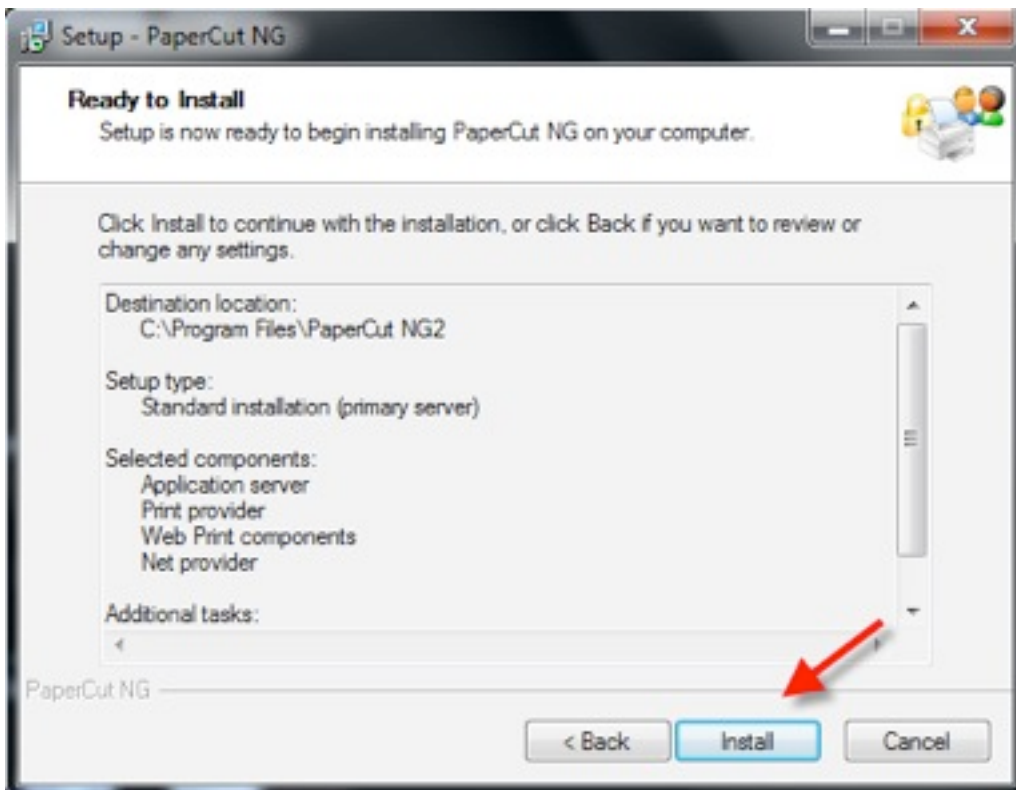
Aqui escolha Standard installation(primary Server) que é o servidor primário e clique em Next



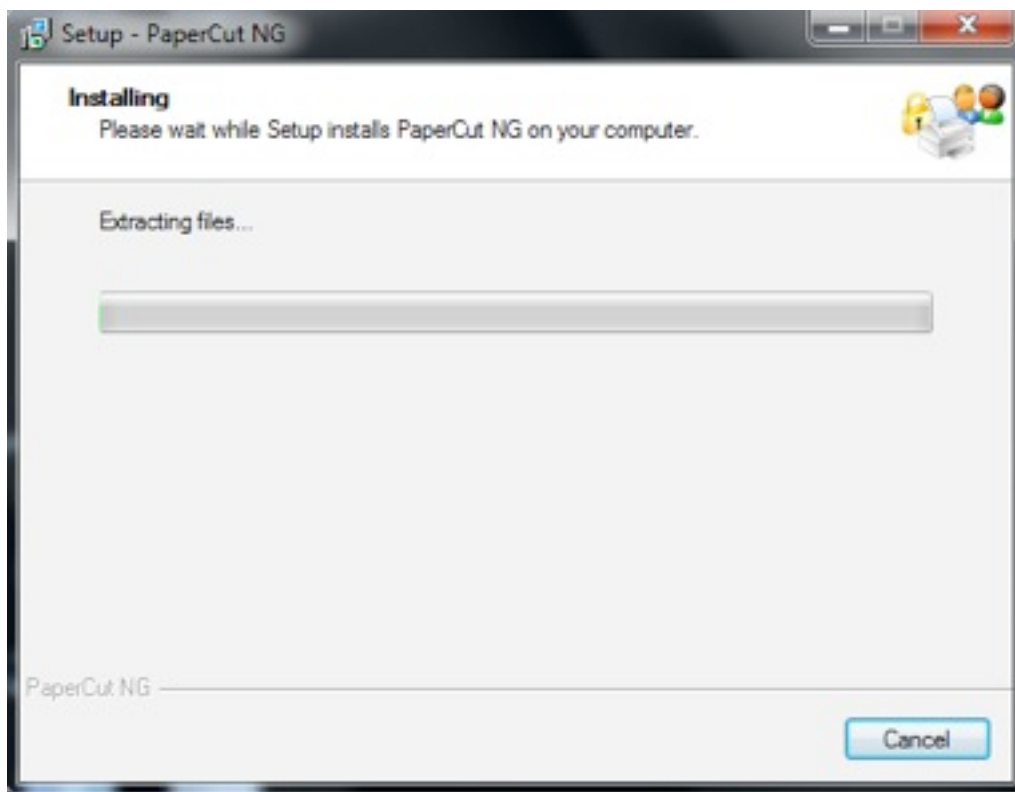
Se não quiser o atalho no desktop desmarque esta caixa de seleção e clique em Next



Clique em install para iniciar a instalação



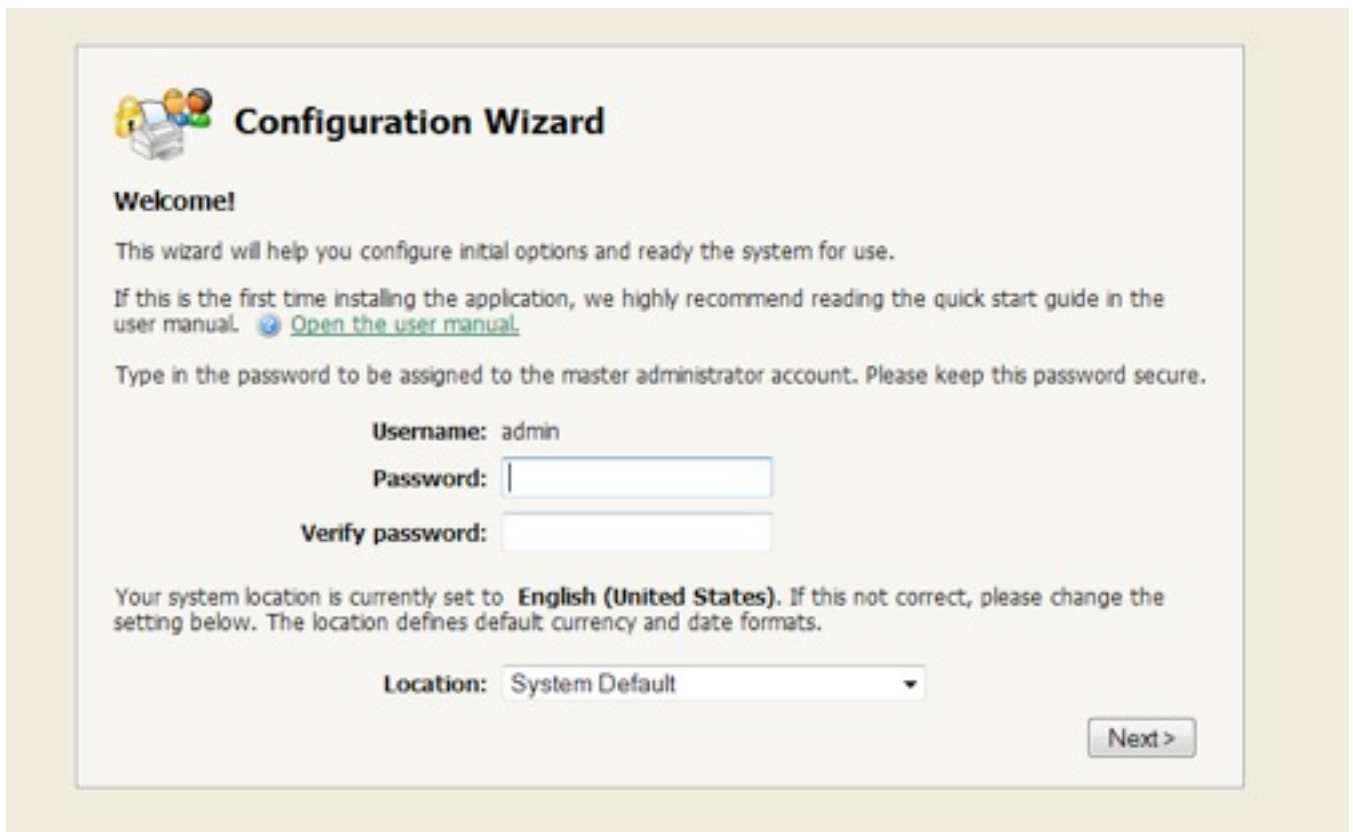
A instalação irá iniciar



Deixe a caixa de seleção Open application and complete configuration marcada e clique em Finish



A seguir iremos iniciar as configurações básica do PaperCut, defina a senha de administração do papercut e clique em next.



Configuration Wizard

Welcome!

This wizard will help you configure initial options and ready the system for use.

If this is the first time installing the application, we highly recommend reading the quick start guide in the user manual. [Open the user manual.](#)

Type in the password to be assigned to the master administrator account. Please keep this password secure.

Username: admin

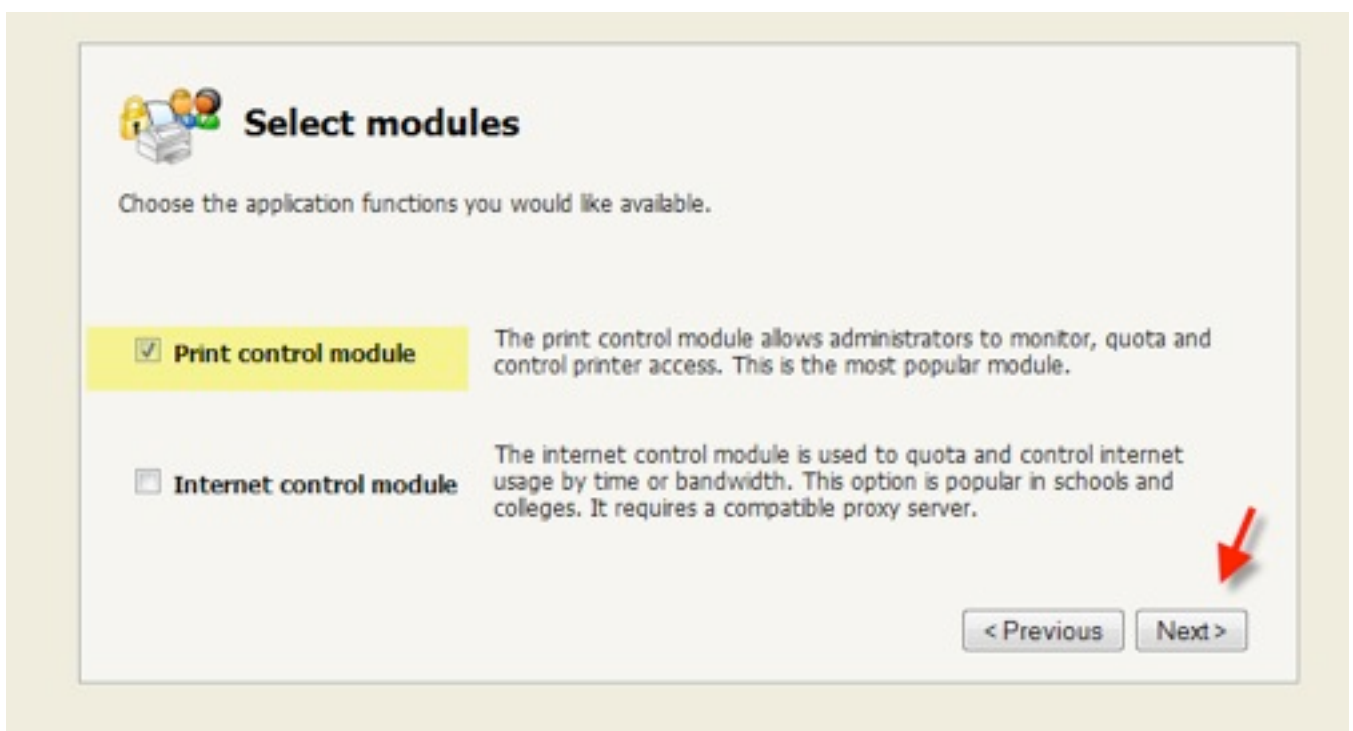
Password:

Verify password:

Your system location is currently set to **English (United States)**. If this not correct, please change the setting below. The location defines default currency and date formats.

Location: System Default

Deixe o padrão Print control module marcado e clique em Next.



Select modules

Choose the application functions you would like available.

Print control module The print control module allows administrators to monitor, quota and control printer access. This is the most popular module.

Internet control module The internet control module is used to quota and control internet usage by time or bandwidth. This option is popular in schools and colleges. It requires a compatible proxy server.

Nesta tela você poderá definir o custo padrão das páginas, você pode deixar zero e configurar mais detalhadamente depois. Clique em next



Default costs for modules

Costs for printing

Define the cost-per-page to be assigned to printers initially created in the system. After setup you will have the option to change costs if required.

In the United States, an appropriate cost for a black & white printer would be \$0.10.

Default cost per page:

< Previous

Next >



Aqui você pode configurar o saldo inicial de todos os usuário e também dizer se os usuários serão restritos ou não(recomendamos **desmarcar** a caixa Deny access when users run out of credit/quota e deixar os usuários irrestritos pelo menos na instalação)



Initial user credit

When users are imported they will be assigned an initial credit (also referred to as a quota).

If this value is left as zero, credit can be manually assigned to users later.

Initial user credit:



Deny access when users run out of credit/quota

< Previous

Next >



Aqui faremos a sincronização de usuários com o AD, selecione Import all users se quiser importar todos os usuários ou Import a subset of the users se quiser importar um grupo específico de usuários. Se não estiver em um domínio escolha Padrão Windows no campo User source



User/group synchronization

The system will synchronize user and group information from a network, domain or computer. Please select the user information source.

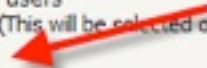
User source: Windows Active Directory ▾

Import all users

Import a subset of the users
e.g. a group or org unit. (This will be selected on the next page)

< Previous

Next >



Aqui o Papercut mostra um resumo das configurações, clique em Finish



Verify setup options

Please confirm that the settings you have entered are correct before continuing.

Admin username: admin

Admin password: (password hidden)

Initial user credit: \$0.00

Restrict access when credit expired: No

User source: Windows Active Directory
(Import all users from the selected source)

Enabled Modules: • Print control module

Print control module settings:

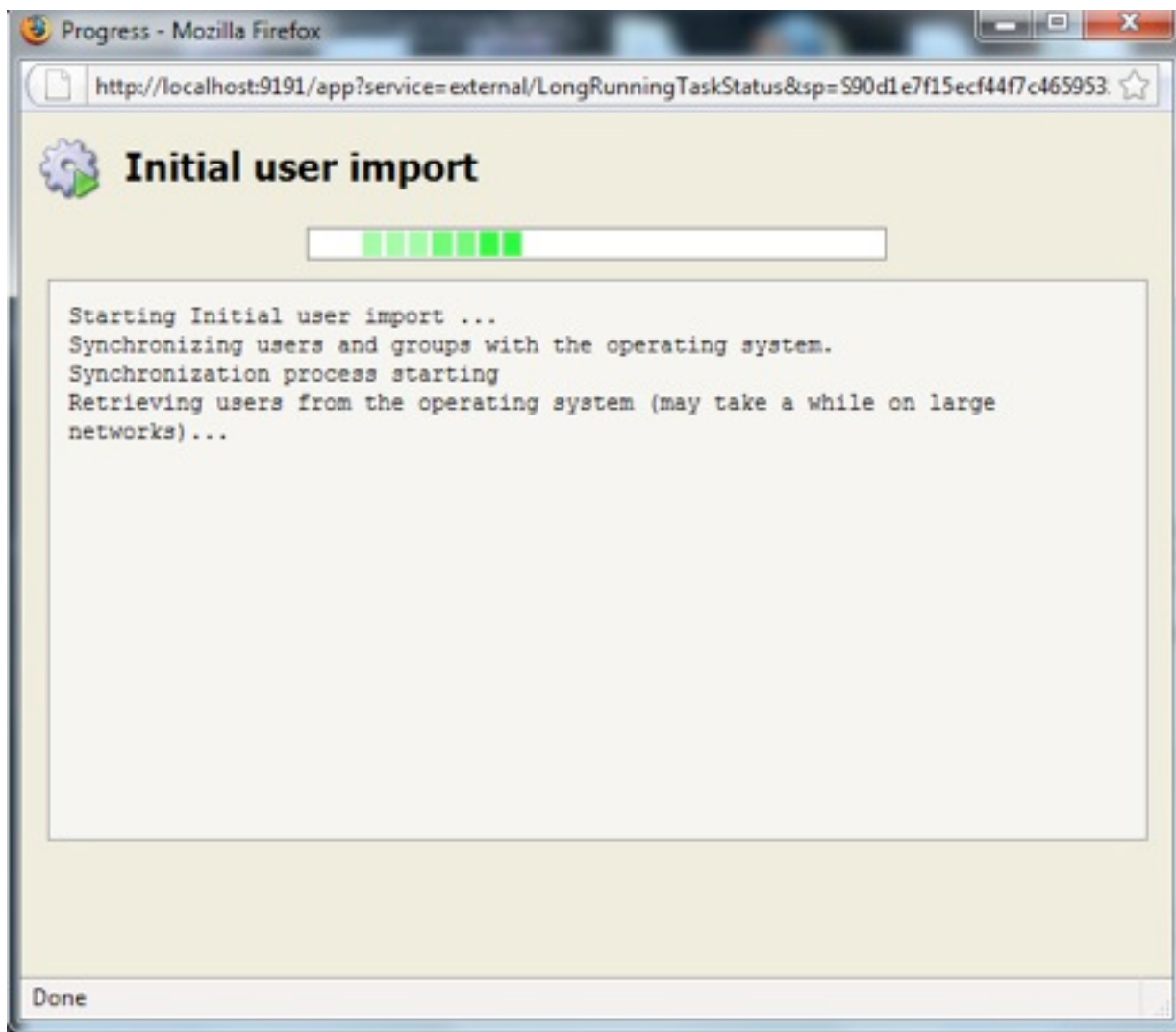
Default page cost: \$0.00

< Previous

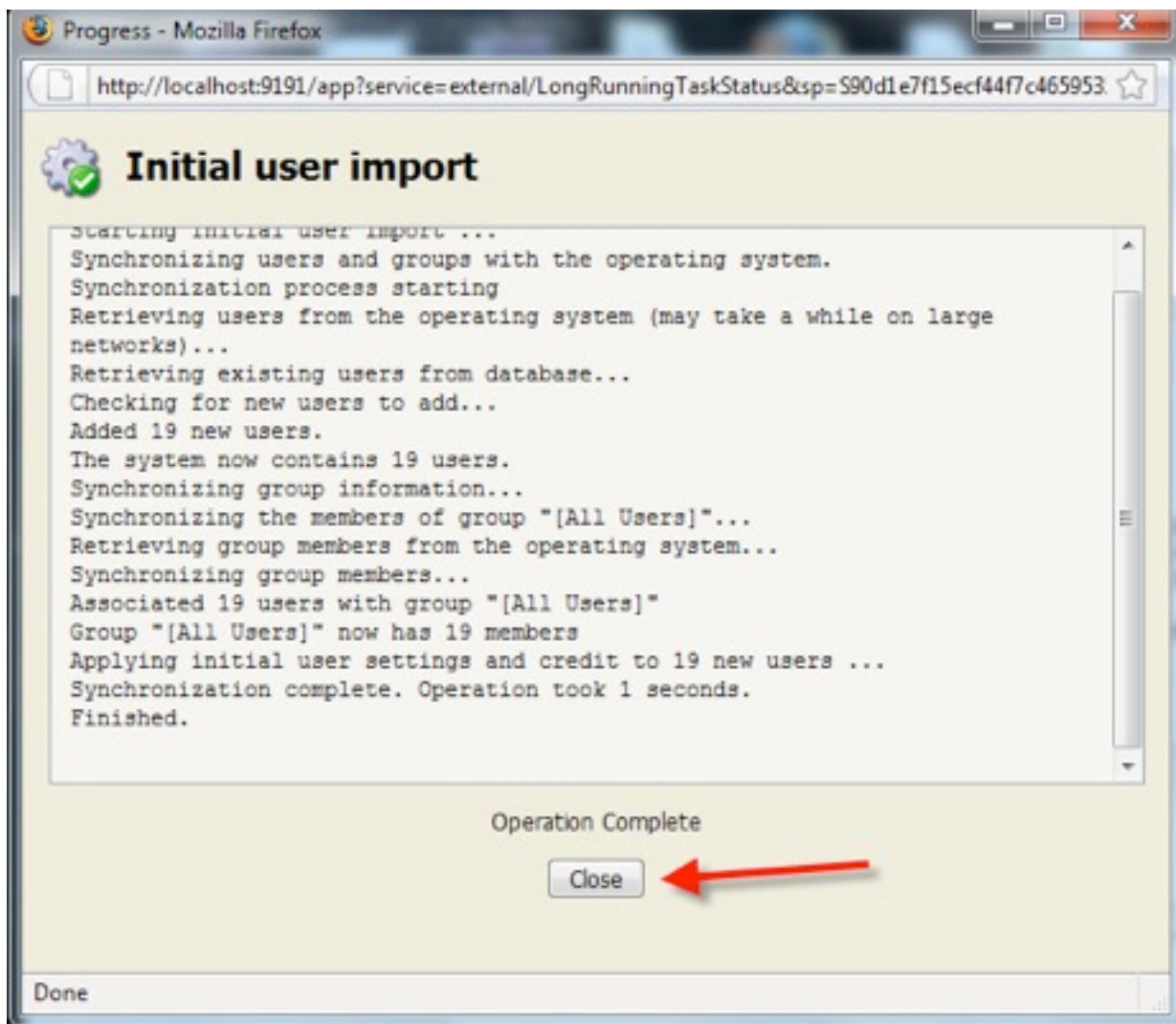
Finish



O Papercut irá iniciar a sincronização com o AD.



Clique em Close quando finalizar



Pronto o Papercut já está instalado, clique em login para acessar a interface do Papercut



Setup Completed

The setup process is completed.

The system has started synchronizing all user accounts. The initial import may take few minutes on larger systems. You should see the status of this task in a popup window. If you can't see this window, please ensure your browser is set to allow popups from this server.

The printers on this server will be added to the system within the next minute.

